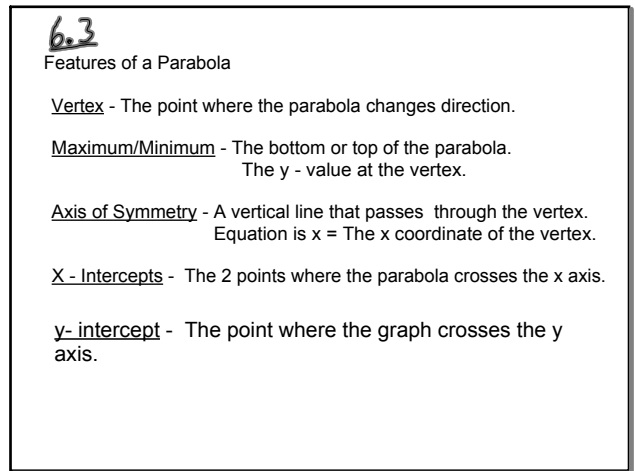
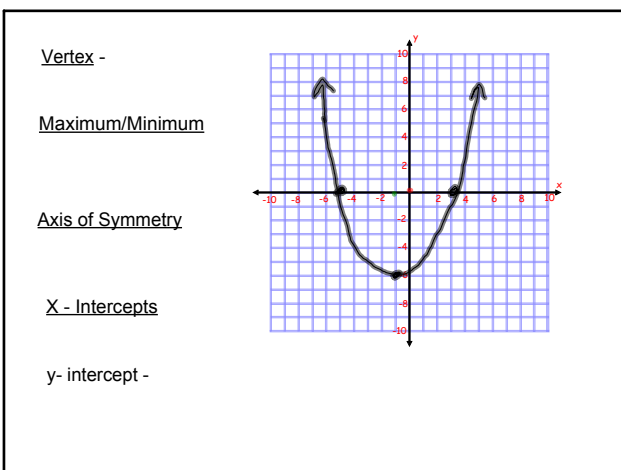


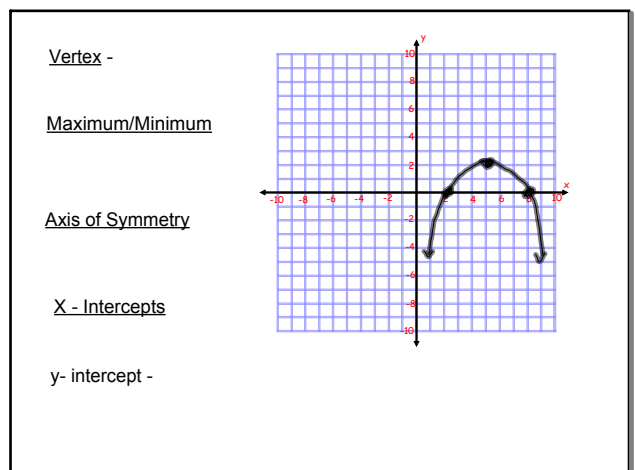
Jan 9-4:50 PM



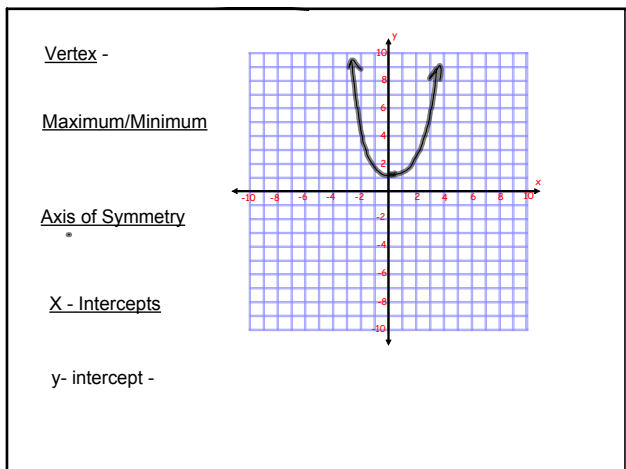
Jan 9-5:04 PM



Apr 19-10:20 AM



Apr 19-10:20 AM



SECOND DIFFERENCES

Another way to determine if a relationship is a quadratic is to determine the second differences. If the first differences are the same the relationship is linear, however if the second differences are the same then the relationship is quadratic and the graph will be a parabola.

example

x	y	F. D.	S.D.
1	2	5-2=3	6-3=3
2	5	11-5=6	9-6=3
3	11	20-11=9	
4	20		

Apr 19-10:20 AM

Jan 9-6:10 PM

Textbook Example 1 - page 257

Assignment - page 260 # 1
 page 262 # 4 , 6
 page 275 # 5
 Handout- second difference



Jan 9-5:27 PM

Jan 11-1:21 PM